

Sustainability Tracking, Assessment & Rating System (STARS)



The Association for the Advancement
of Sustainability in Higher Education

About AASHE

- A North American association of **colleges & universities** working to create a sustainable future. Over 1000 campus members.
- Professional home for **campus sustainability officers**.
- **Mission:** Empower higher education to lead the sustainability transformation
- **Benefits:**
 - Access to Member-only Resources in the Interactive Resource Center
 - Event Discounts
 - STARS Registration Discount
 - Products & Services Discount
 - Awards Program
 - Newsletters
 - Advertisement Opportunities
 - Publicity
 - Professional Development & Networking
 - Governance Opportunities

What is STARS?

- ✓ A **voluntary, self-reporting** framework
- ✓ A **guide** for advancing sustainability in all sectors of higher education.
- ✓ A common **standard of measurement** for sustainability in higher education.
- ✓ A tool that promotes a comprehensive understanding of sustainability that includes its **social, economic and environmental** dimensions.



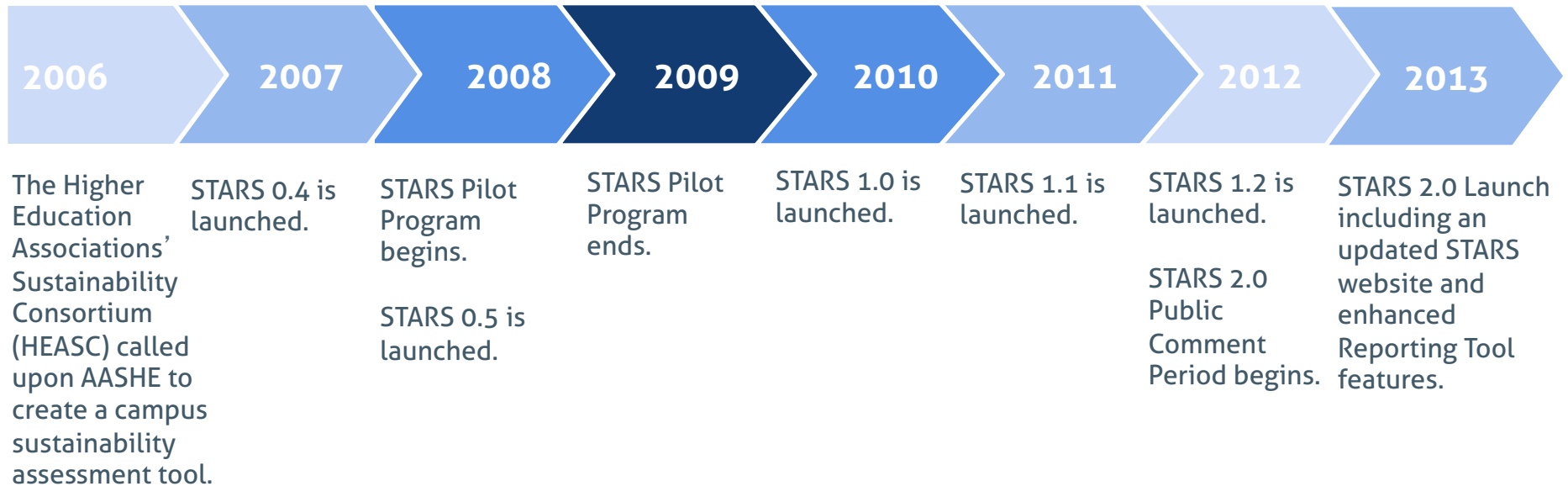
Why is STARS Needed?

- “You can only manage what you can measure.”
- Sustainability is a new frontier with few established metrics. A standard framework for measuring success is needed.
- STARS is a broad-based, stakeholder-designed, tested framework.



STARS Technical Development Timeline

**Continuous research since Oct. 2006 to further develop STARS credits*





Collaboration vs. Competition

- Rating NOT Ranking
- STARS focuses on sharing sustainability information
- Created in collaboration with the higher education community

Who Can Participate?

Any higher education institution in the world

Do not have to be a member of AASHE

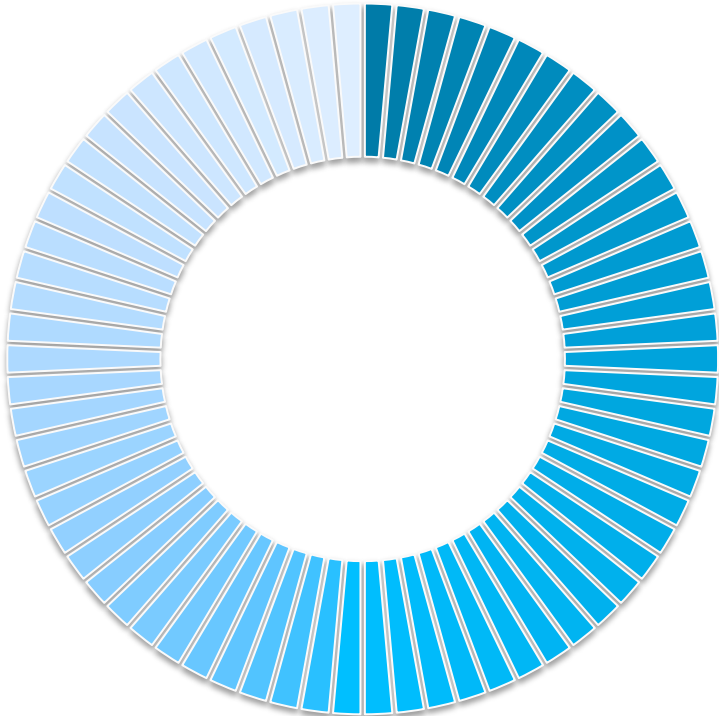


How is STARS Organized?

STARS 2.0: 4 categories, 70 credits

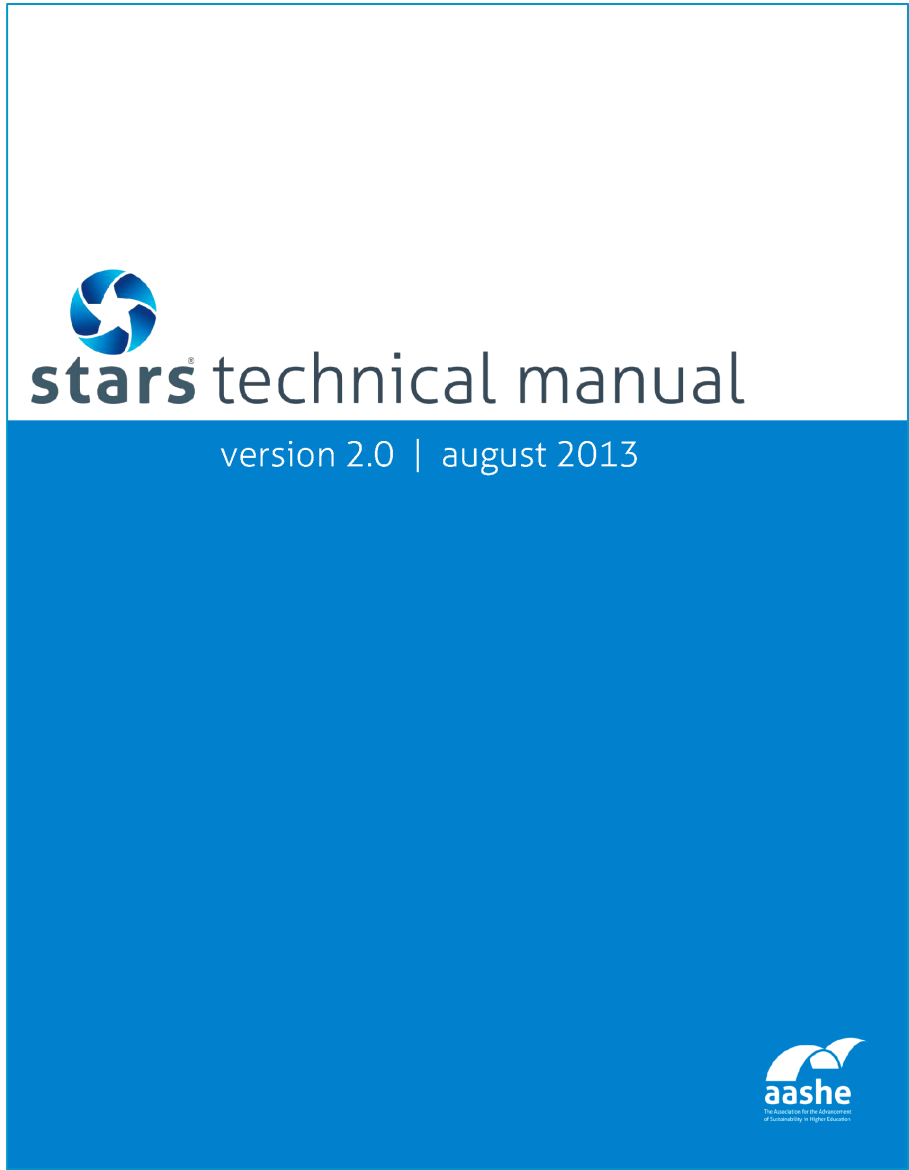


STARS 2.0



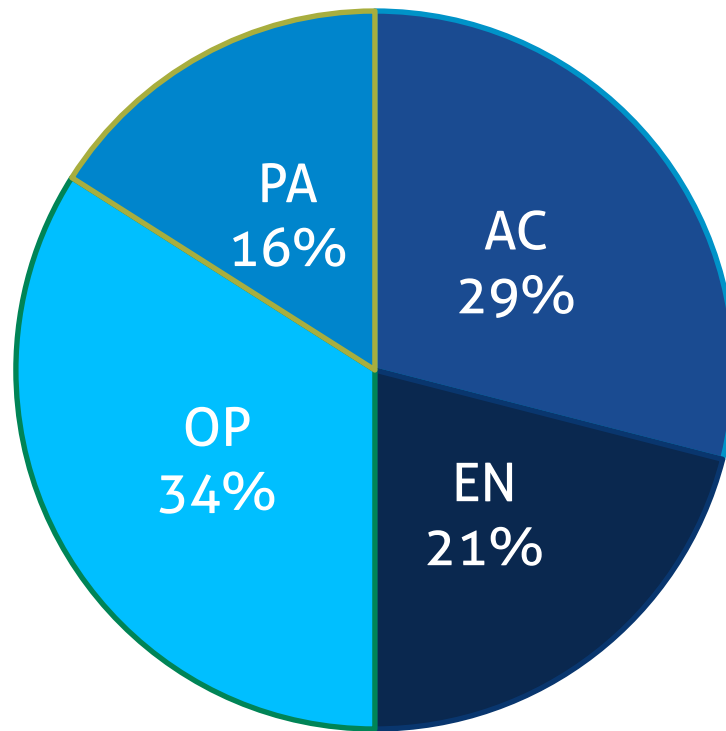
STARS Credits

1. Credit Rationale
2. Criteria
3. Applicability
4. Scoring
5. Reporting Fields
6. Measurement
7. Standards & Terms



Point Allocation

STARS 2.0



Scoring

STARS 2.0

$$\frac{\text{Total points earned}}{\text{Total applicable points}} + \text{Innovation points}$$

STARS Recognition Levels


Rating Level	Minimum Score Required
STARS Bronze	25
STARS Silver	45
STARS Gold	65
STARS Platinum	85

STARS Reporter

- Scores are not public
- Same benefits as institutions that pursue a STARS rating
 - Positive recognition for participation
 - Ability to share data publicly
- All participants have the option to choose STARS Reporter status before completing their final submission and making it public.

Availability of STARS Data

[aashe](#) [stars](#) [conference](#) [commons](#) Help | Log In


 The Sustainability Tracking, Assessment & Rating System™ (STARS) is a transparent, self-reporting framework for colleges and universities to measure their sustainability performance.

[Register](#) [Engage](#) [Report](#) [Submit](#) **Celebrate** [Evaluate](#)

[Home](#) / [STARS Institutions](#) / [Participants & Reports](#)

STARS Participants & Reports

597 institutions are STARS participants. Of these institutions 473 are AASHE members (™), 229 are STARS Charter Participants (®), and 49 participated in the original STARS pilot (®). Each institution's most recent report is listed below. Click on an institution's name to view all STARS reports.

Institution	Version	Rating	Submission Date
A.T. Still University of Health Sciences	1.2		
Abilene Christian University	1.2		
Adams State College	1.2		
Agnes Scott College ^{m c}	1.2	Silver	Feb. 15, 2012
Aims Community College	1.2		
Alfred State College ^m	1.2	Bronze	Oct. 9, 2012
Allegheny College ^m	1.2		

[aashe](#) [stars](#) [conference](#) [commons](#) Help | Log In


 The Sustainability Tracking, Assessment & Rating System™ (STARS) is a transparent, self-reporting framework for colleges and universities to measure their sustainability performance.

[Register](#) [Engage](#) [Report](#) [Submit](#) [Celebrate](#) [Evaluate](#)

[Home](#) / [STARS Institutions](#) / [Utah State University](#) / Oct. 22, 2013

Utah State University

Logan, UT, US

Rating	Score	Liaison	Submission Date	President's Letter
Silver	46.60	Alexi Lamm	Oct. 22, 2013	Download

Education & Research

Co-Curricular Education 12.77 / 17.75

Credit	Status	Points
Student Sustainability Educators Program	✓ Complete	0.52 / 5.00
Student Sustainability Outreach Campaign	✓ Complete	5.00 / 5.00
Sustainability in New Student Orientation	✓ Complete	2.00 / 2.00

STARS v1.2

Mechanisms for Report Accuracy

- ✓ For each credit, a **Responsible Party** from the institution provides a statement that the information submitted is accurate
- ✓ Each submitted report must be accompanied by a **letter from the institution's president, chancellor, or highest ranking executive** that affirms the accuracy of the institution's STARS report
- ✓ All institutions wishing to pursue a Platinum rating will be subject to **pre-publication review** by AASHE staff. Staff may conduct random pre-publication review for other STARS reports
- ✓ AASHE staff conduct **post-publication review** for all STARS reports after a rating has been earned
- ✓ All **information in STARS reports is made publicly available** on the STARS website
- ✓ Each institution may submit a **data correction request** to correct mistakes in its STARS report after a rating has been earned and the report has been made public on the STARS website



A STARS subscription is 12-months.



Submission of a STARS Report is encouraged within one year.



STARS recognition levels are valid for three years.



Celebrate!

- Share your institution's story
- Show off your STARS seal
- Access to STARS Data Displays
- Set goals and generate new ideas
- Saved money or time in developing a sustainability report or plan
- Collaborate across campus
- Streamline reporting
- Benchmark with peers
- Shape the system by providing feedback



How is STARS Different?

- Open to any institution of higher education
- Only offers positive recognition
- Transparent
- Self-assessment
- Encompasses sustainability, not just environmental indicators
- Created by the higher education community



STARS Registration Fees

Full Access STARS Participant (12-month subscription):

AASHE Member	\$900
Non-Member	\$1,400

Renewal Discount (within 90 days of previous subscription):

AASHE Member	\$450
Non-Member	\$700

Register on-line at stars.aashe.org

STARS Participant Benefits

Measure your institution's **current sustainability performance**

Create a baseline for continuous improvement toward sustainability

Streamline your sustainability reporting efforts by sharing STARS reporting data with other organizations

Compare and learn from other institutions of similar type and demographic

Gain global recognition for your sustainability efforts as a STARS rated institution

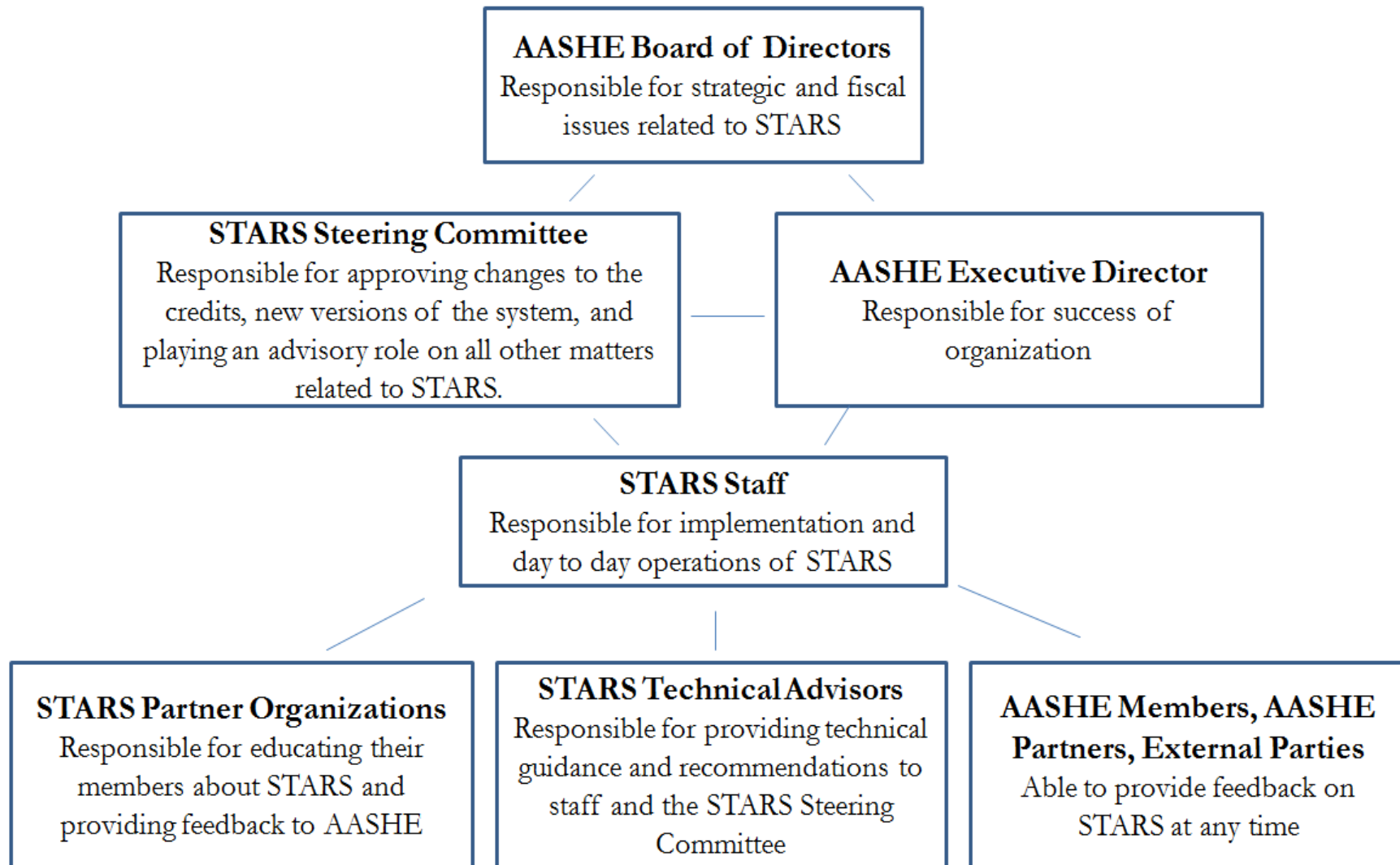
Celebrate your rating with access to **STARS promotional tools**

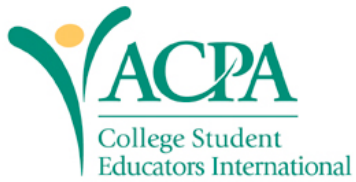
Monitor your progress toward a STARS rating with **automated point calculation**

Excel and PDF **exports** of STARS data

Access to all public STARS data through the STARS API

STARS Governance Structure





STARS Partner Organizations



Association of College & University Housing Officers - International



Second Nature
Education for Sustainability



EMPOWERING A GENERATION TO POWER A NATION



A Quick Recap...

1. Register

- Create a baseline for continuous improvement while showcasing your campus's sustainability efforts.

2. Engage

- Foster cross-campus sustainability collaboration by gathering a diverse data collection team.

3. Report

- See what you're doing right and what you can improve on.

4. Submit

- You did it! You earned an official STARS rating and established a sustainability baseline.

5. Celebrate

- Show off that STARS seal and let everyone know about your good work.

6. Evaluate

- Use STARS data gathered from your peers to enhance your own sustainability campus culture

Contact Info

- 1) Email stars@aaashe.org
- 2) Call (303) 395 1331 x25
- 3) Subscribe to the AASHE Bulletin (www.aashe.org/user/newsletters)
- 4) Post a question to the AASHE Campus Sustainability Discussion Forums (www.aashe.org/forums)
- 5) Post to the Campus Sustainability Perspectives Blog (www.aashe.org/blog)